



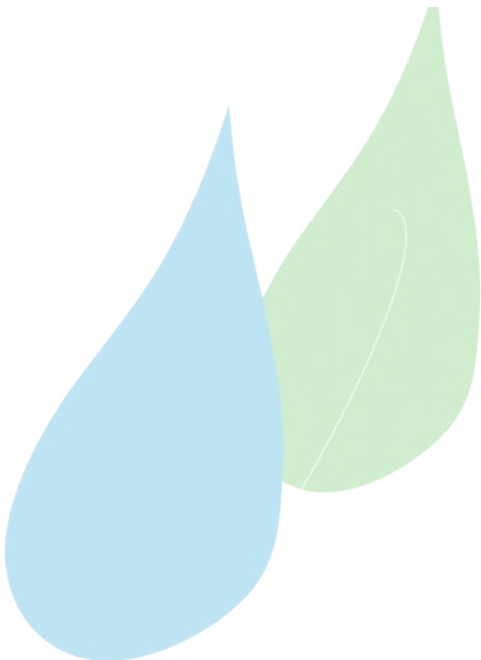
RAINWATER HARVESTING
Control systems



Watercare 2100S

Delivers water at up to 14m³/h

We **care** for your **water**



Watercare 2100S

Overview system controller 8-40 up to 14-60

Application

- Processes rainwater for industrial and commercial facilities
- Provides rainwater for toilets, laundry and irrigation by integrated pumps
- Up to a volume of 14 m³/h

Benefits

- High quality, professional system engineering
- Quick and simple installation
- Specially developed automatic controller
- High degree of safety in operation

Product description

The **Watercare 2100S** is a complete rainwater system with integrated break tank, dual and multi-stage centrifugal pump and electronic controller.

It monitors the level in the catchment and break tanks. Depending on demand, the dual pump sucks the rainwater directly from the catchment tank and supplies it to the points of use.

If there is a shortage of rainwater or manual changeover, the break tank is topped up automatically, on demand, with mains water complying with DIN EN 1717. The solenoid valve is also checked regularly, in order to avoid stagnant water in the mains water line.

A supply pump can be connected if distances are too long. The supply pump is an optional accessory.



We **care** for your **water**

General specification

- Dual pump unit, with multi-stage, self priming horizontal centrifugal pumps and alternating start-up
- Option to connect a second supply pump
- Maximum flow up to 14 m³/h
- Electronic controller with 4-line LCD display
- Hours run counter for each pump
- Dual pump unit pressure indicator
- Catchment tank level gauge (optional)
- Manual changeover to mains water mode optional
- Volt Free BMS/Fault Alarms
- RS 232 interface
- Everything installed in a powder coated sheet steel housing.

Dimensions and Weights

| | 8-x / 14-x |
|---------------------------|------------|
| Width mm | 800 |
| Height mm | 1550 |
| Depth mm | 725 |
| Empty weight | 150 kg |
| Max. weight | 320 kg |
| Pressure line connection* | 1 1/2 " |
| Booster pump connection* | 2 x 1" |
| Mains water connection* | 1 1/4 " |
| Volume of header tank | 200 l |
| Emergency overflow | DN 100 |
| * Male connection | |

Technical Specification

| | Watercare 2100S 8-40 | Watercare 2100S 8-60 | Watercare 2100S 8-70 | Watercare 2100S 14-40 | Watercare 2100S 14-60 |
|---|-------------------------|-------------------------|-------------------------|--------------------------|--------------------------|
| Max. Movement capacity m³/h | 8 | 8 | 8 | 14 | 14 |
| Max. head in m | 42 | 58 | 72 | 47 | 59 |
| Current drain in A | 2 x 3,9 (1 x ~230V) | 2 x 5,3 (1 x ~230V) | 2 x 5,3 (1 x ~230V) | 2 x 5,3 (1 x ~230V) | 2 x 6,5 (1 x ~230V) |
| Motor output P1 in kW | 2 x 880 | 2 x 1,200 | 2 x 1,480 | 2 x 1,200 | 2 x 1,480 |

We **care** for your **water**

OTHER PRODUCTS & SERVICES AVAILABLE FROM ORCHARD

RAINWATER SYSTEMS

- **COMPLETE RAINWATER HARVESTING AND MANAGEMENT SYSTEMS**
For Domestic, Garden and Commercial applications.
- **UNDERGROUND AND ABOVE GROUND TANKS**
From 300 to 100,000 Litres
- **CONTROL AND MONITORING EQUIPMENT**
- **SUBMERSIBLE AND ABOVE GROUND PUMPS**
- **TOTAL DESIGN SERVICE**
Design service available for Domestic and Commercial applications .
- **INSTALLATION, COMMISSIONING , SERVICING AND MAINTENANCE PACKAGES**

ACCESSORIES

- **UV Filters, Pre Filters**
- **Soakaways**
- **Pressure Vessels**

SEPARATOR ALARMS

- **Mains powered alarms**
- **GSM alarms**
- **Web based alarms**
- **Wired and Wireless sensors**

Orchard Watercare Ltd.
Bingley
West Yorkshire

T. 01274 510677
E. info@orchardwatercare.co.uk
W. www.orchardwatercare.co.uk

