

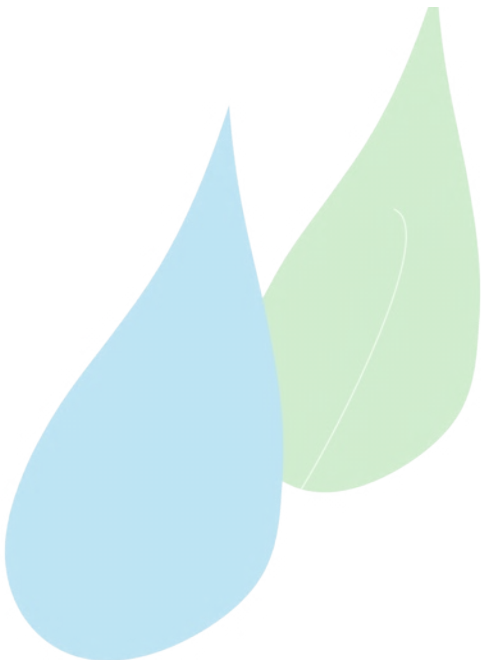


RAINWATER HARVESTING
Control systems



Watercare 2050
Delivers water at up to 10m³/h

We **care** for your **water**



Watercare 2050



Application

- Processes rainwater for domestic and commercial facilities
- Provides rainwater for toilets, laundry and irrigation by integrated pumps
- Volumes up to 10 m³/h

Benefits

- Fully automatic
- Quick and simple installation
- Specially developed automatic controller
- Compact and ready for connection

Product description

All system processes are monitored constantly. This guarantees that the system is ready for operation at any time.

The multi-stage, self-priming centrifugal pump guarantees both quiet operation and a convenient start-up. The pumps start up alternately, which reduces down time. If larger volumes have to be moved, then the second pump is switched in for cascaded operation.

In operation, the pressure sensor provides dry running protection and pressure controlled disconnection for convenient handling - the pressure is shown clearly on the LCD display. Should there be a shortage of rainwater, mains water is supplied on demand until sufficient rainwater is again available. At the same time, a zone valve makes the changeover controlled via a float switch in the rainwater tank. The mains water is fed in accordance with EN 1717 via a proportional float valve.

As stagnation protection, the water in the mains supply tank is changed after a standing time of 30 days. The change to mains water operation can also be made manually.

All connections are designed as screw connections, except for electrical connections which are plug-in. Covers, pumps and mains water tanks are provided with vibration protection components. The floor-mounted system controller is easy and quick to install.



We **care** for your **water**

General specification

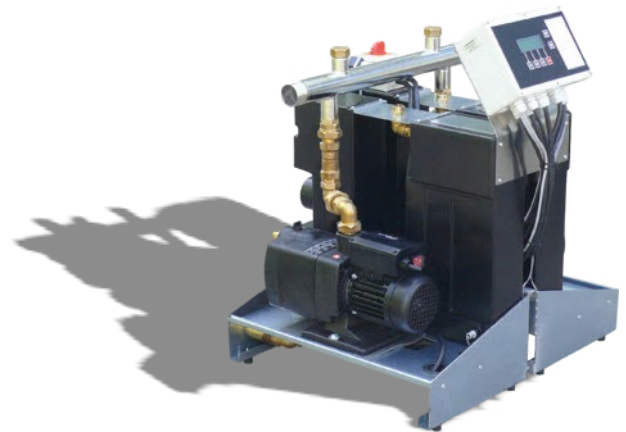
- Polyethylene mains water break tank
- Galvanized metal console
- Polypropylene pump hydraulics housing
- Multi-stage self-priming centrifugal pumps
- Electronic control
- Float switch with 20m lead and calibration weight
- Cover
- Emergency overflow: 70 mm dia.
- Vibration damper for pump and mains water break tank
- Proportionally controlled top-up valves
- Free discharge to EN1717 TYPE AB
- Capacity (max.): 10 m³/h
- Pressure (max.): 4.8 bars
- Head (max.): 20 m
- Suction depth (max.): 8 m
- Protection class: IP 41
- Rated output: 2 x 1000W
- Supply voltage: 230V/50Hz
- Suction line: 2 x 1" IG (Female connection)
- Pressure line: 1^{1/4}" AG (Male connection)
- Mains water connection: 2 x 3/4" AG (Male connection)
- Emergency overflow: 2 x 70 mm dia. Pipes
- Float switch: 20 m (no earth lead)

Dimensions and Weights

Dimensions (W x H x D)	550 x 850 x 650 mm
Weight (empty)	62 kg

Optional Accessories

- Supply pump for poor suction conditions (large distance between rainwater tank and system controller)
- Level sensor
- Connection set



We **care** for your **water**

OTHER PRODUCTS & SERVICES AVAILABLE FROM ORCHARD

RAINWATER SYSTEMS

- **COMPLETE RAINWATER HARVESTING AND MANAGEMENT SYSTEMS**
For Domestic, Garden and Commercial applications.
- **UNDERGROUND AND ABOVE GROUND TANKS**
From 300 to 100,000 Litres
- **CONTROL AND MONITORING EQUIPMENT**
- **SUBMERSIBLE AND ABOVE GROUND PUMPS**
- **TOTAL DESIGN SERVICE**
Design service available for Domestic and Commercial applications .
- **INSTALLATION, COMMISSIONING , SERVICING AND MAINTENANCE PACKAGES**

ACCESSORIES

- **UV Filters, Pre Filters**
- **Soakaways**
- **Pressure Vessels**

SEPARATOR ALARMS

- **Mains powered alarms**
- **GSM alarms**
- **Web based alarms**
- **Wired and Wireless sensors**

Orchard Watercare Ltd.
Bingley
West Yorkshire

T. 01274 510677
E. info@orchardwatercare.co.uk
W. www.orchardwatercare.co.uk

